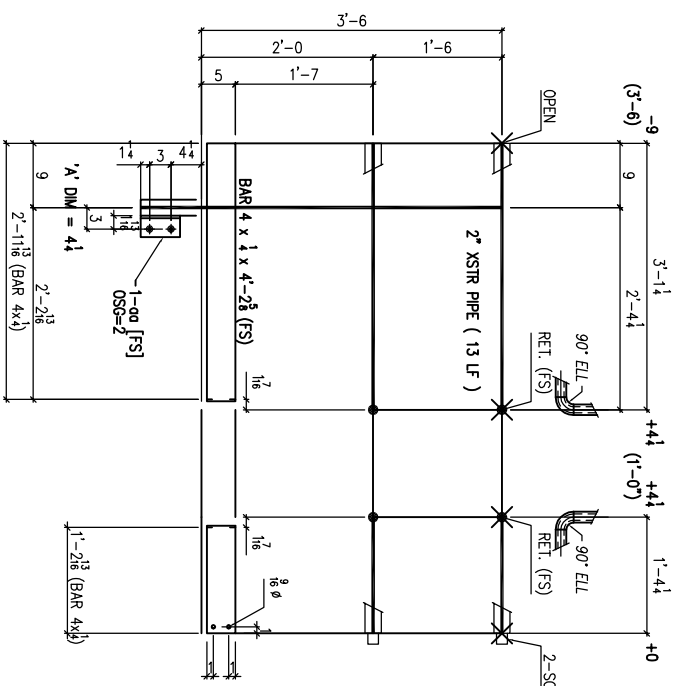
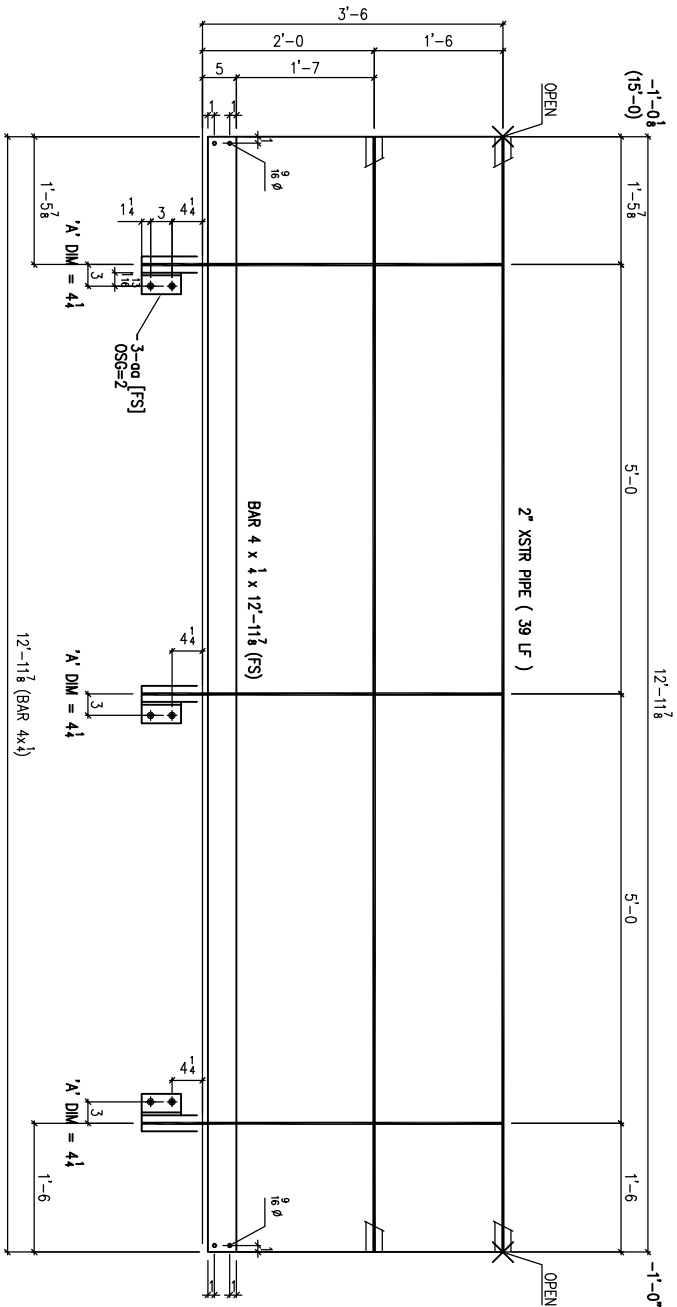


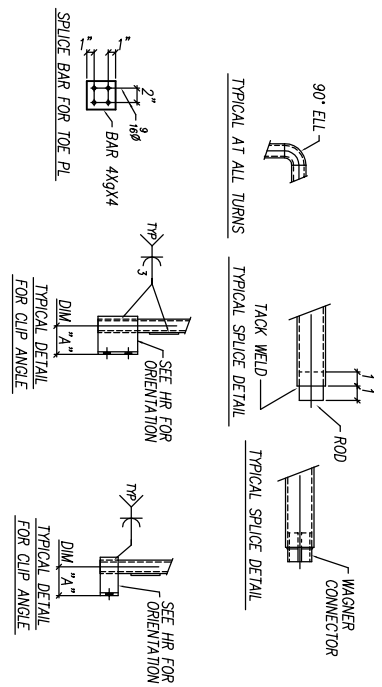
3'
11/8"
A' DIM = 44



ONE ~ Guard Rail ~ R1R ONE ~ Guard Rail ~ R1L



ONE ~ Guard Rail ~ R2



NOTE:
WELD PIPE 1/2" FILLET WELD
CONT. AND GRIND U. NTD.

HANDRAIL IS HOT DIPPED GALV.
SHOP DRILL 9/16" VENT HOLES
AS REQUIRED IN PIPES.

SEQ	SHIPPING BILL	BILL OF MATERIAL	QTY	MARK	QTY	SHAPE	FT	IN's	WK	REMARKS	Weight
ONE	R1	Guard Rail	1		13	0				lin feet	65.26
		2" XSTR PIPE	1		4	2 3/8				lin feet	14.36
		1/2 x 4	1		0	5 1/2					4.73
		TOTAL WEIGHT									84.35
ONE	R2	Guard Rail	1		39	0				Lin Feet	195.78
		2" XSTR PIPE	1		12	11 7/8				Lin Feet	44.20
		1/2 x 4	3		0	5 1/2					14.18
		TOTAL WEIGHT									254.16

Licensed SSOCP User

PRINTS

APPROVAL	
SHOP	
FIELD	

CONTRACTOR: Bugh Contractors
 Job / Area: Mitchell Jordan, PE

PRIMER: Red Oxide
 STEEL: A36 UNO
 HOLES: 13/16
 WELDS: E70xx

RAMSAY STEEL

SSDCP Chemicals
 Platform 17G addition

202 No. 03-116
 Form No. Rail Sht. 1